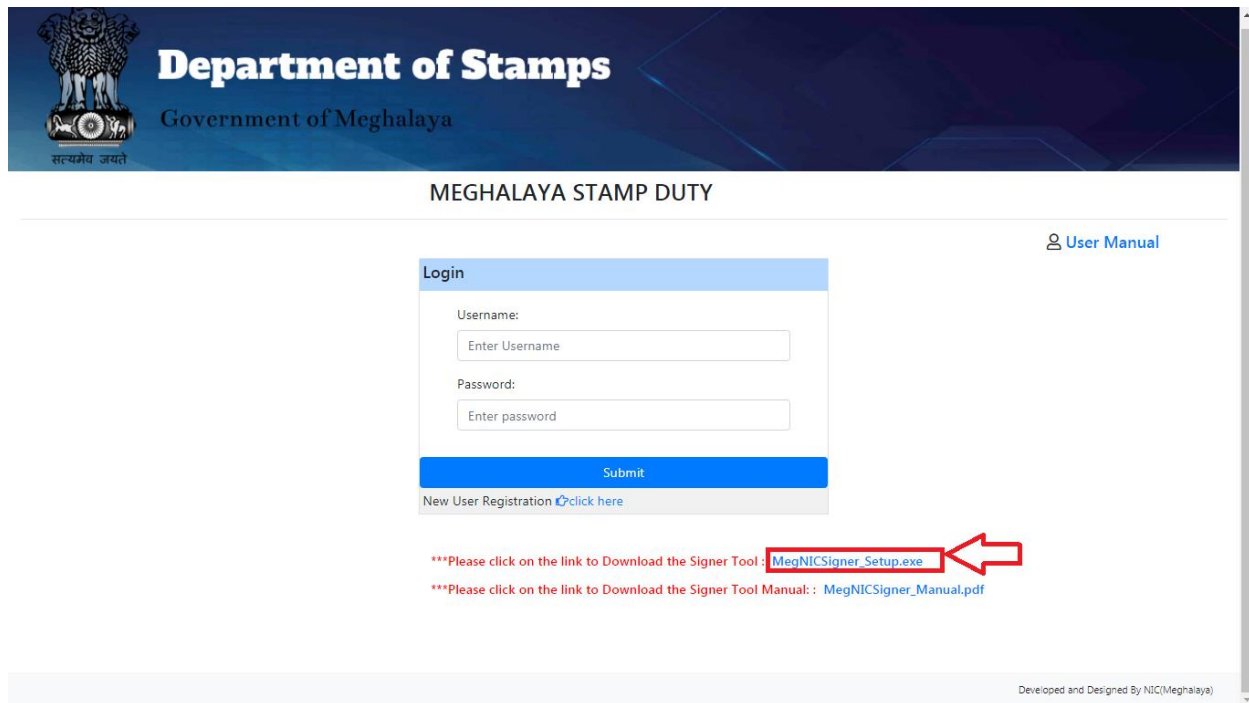


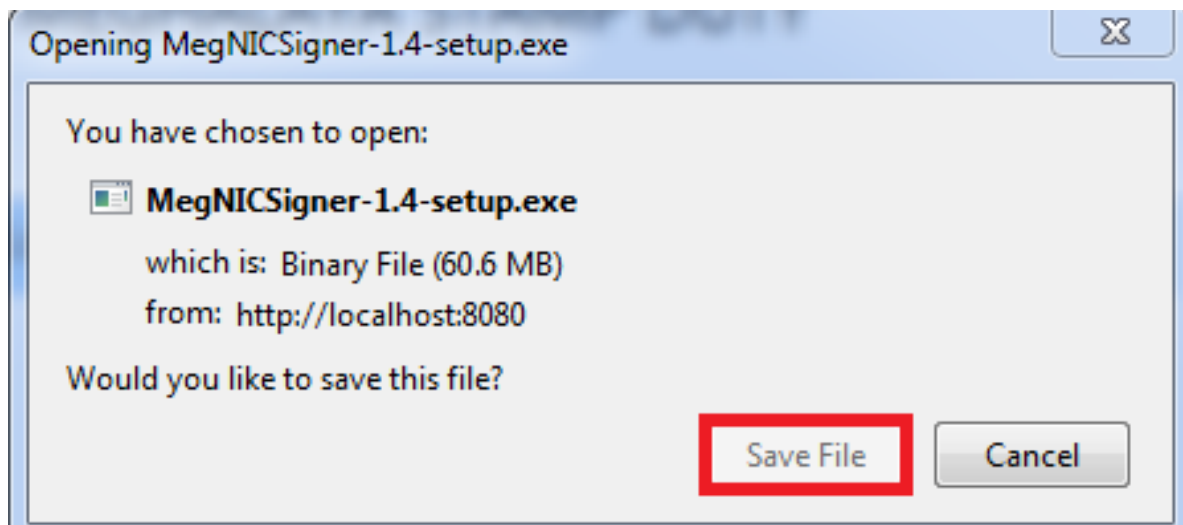
Signer Tool Installation Manual

****Please Click on the link provided [MegNICSigner_Setup.exe](#) to download the Signer tool.**



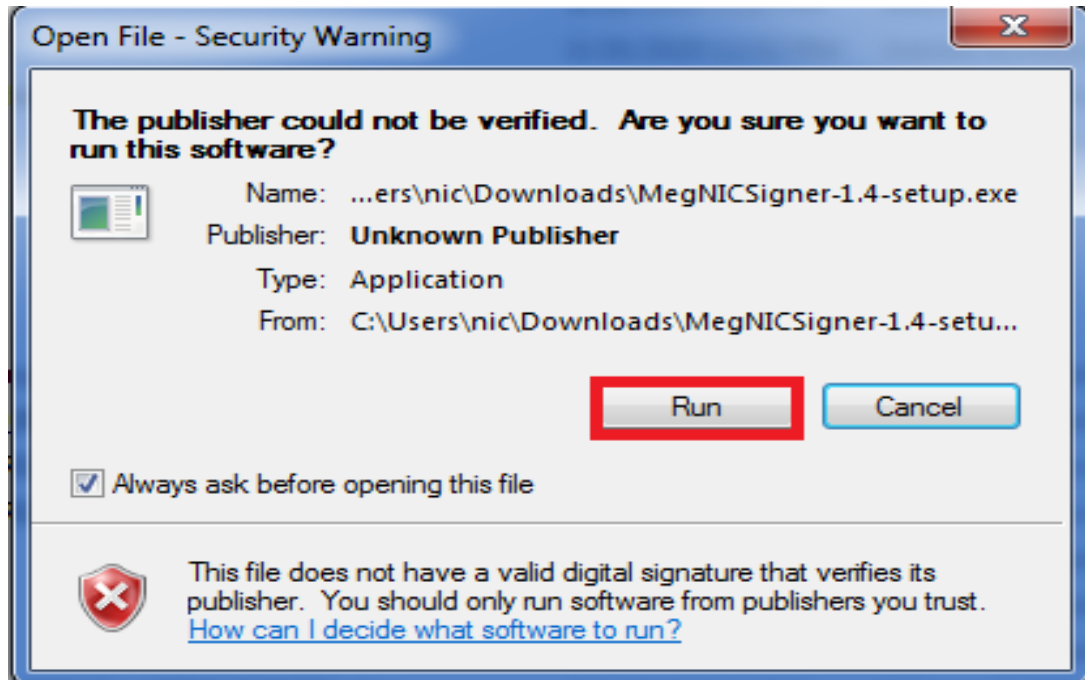
The screenshot shows the 'Department of Stamps' website for the Government of Meghalaya. The page title is 'MEGHALAYA STAMP DUTY'. It features a login form with fields for 'Username' and 'Password', and a 'Submit' button. Below the form is a link for 'New User Registration'. A red box highlights the link '[MegNICSigner_Setup.exe](#)' in the instructions, with a red arrow pointing to it. The footer of the page reads 'Developed and Designed By NIC(Meghalaya)'.

****Save the Signer Setup if Asked.**

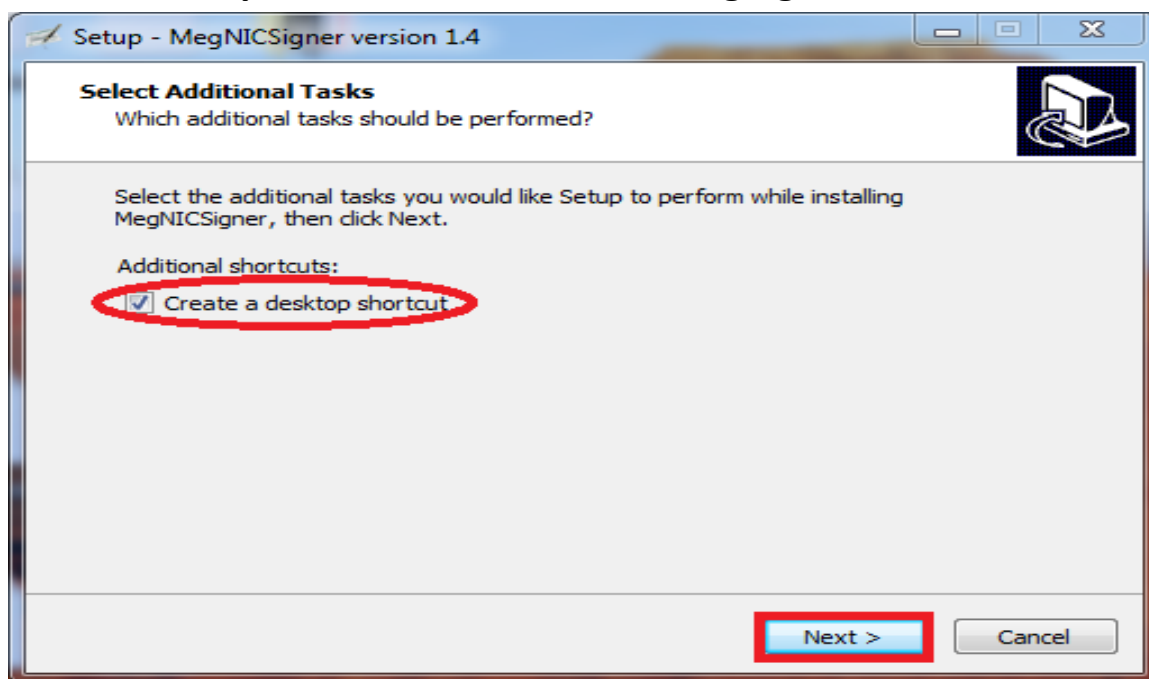


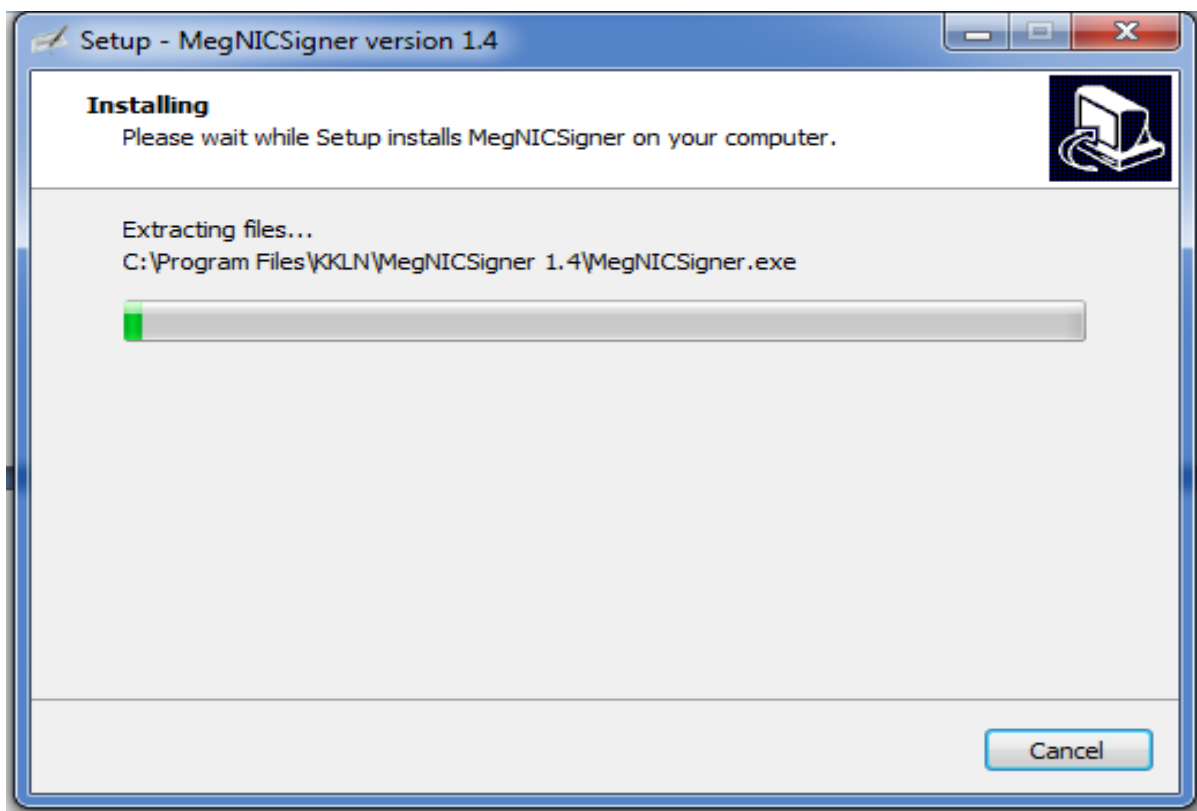
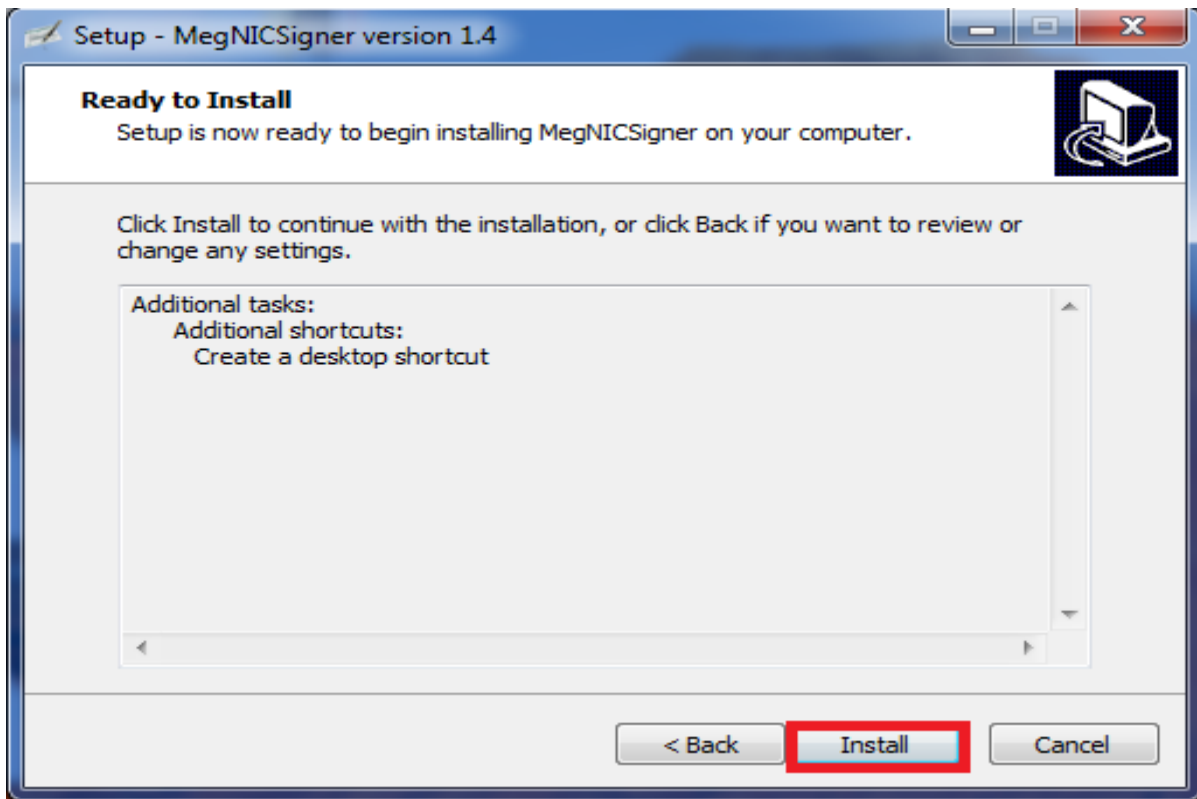
The screenshot shows a Windows dialog box titled 'Opening MegNICSigner-1.4-setup.exe'. The text inside the dialog reads: 'You have chosen to open: **MegNICSigner-1.4-setup.exe** which is: Binary File (60.6 MB) from: http://localhost:8080'. Below this, it asks 'Would you like to save this file?'. There are two buttons at the bottom: 'Save File' (highlighted with a red box) and 'Cancel'.

**** Run the Setup to Install Signer.**

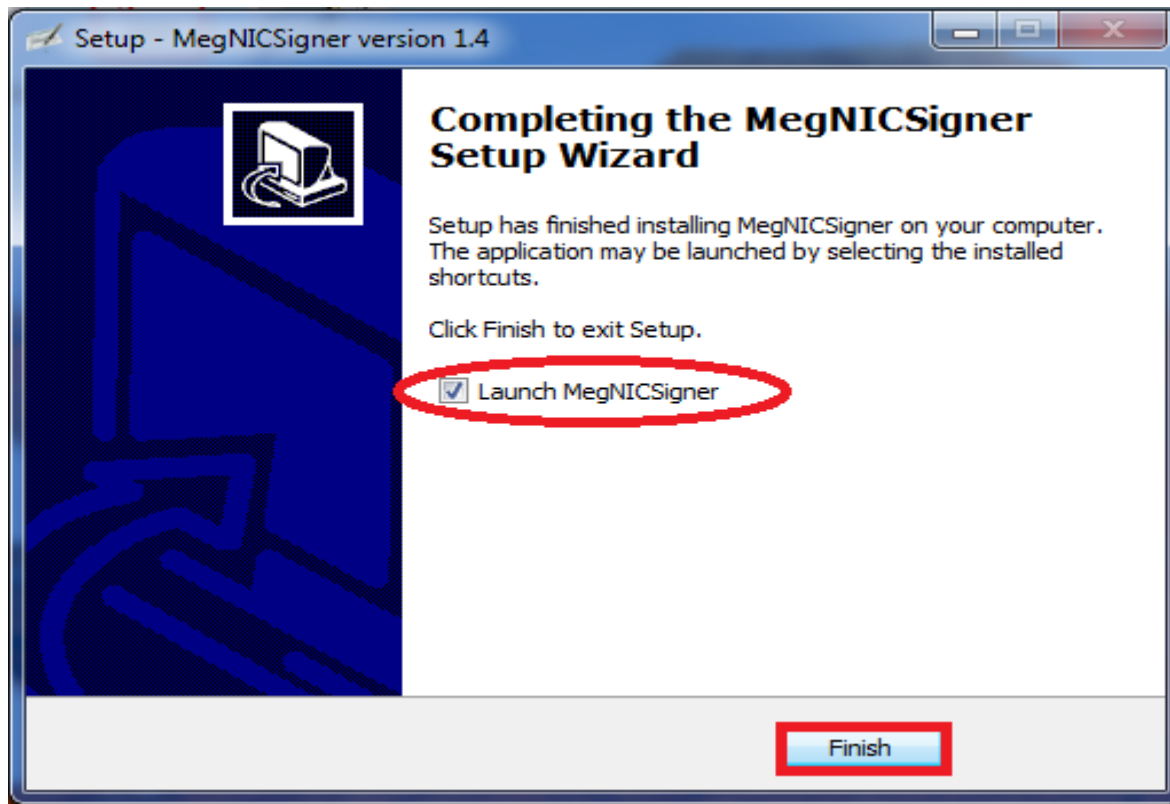


**** Follow Steps as shown in the following figures.**

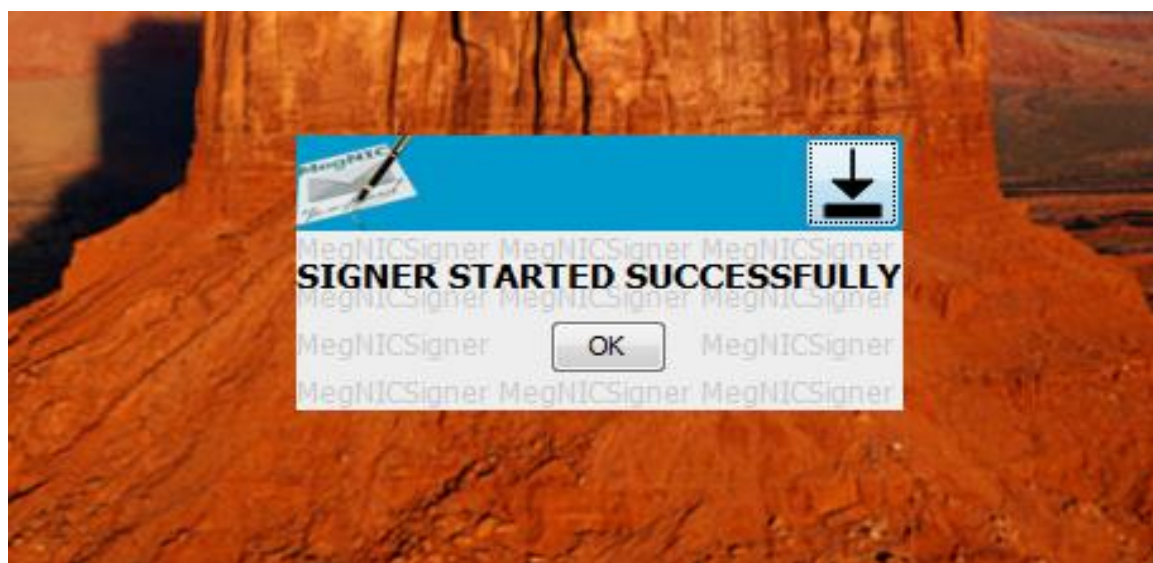




**** Signer installation Finish on your Machine and can be Launch.**



**** Message you will get when Signer is started.**



****Signer is running on the background. You can check on you Bottom Right Corner.**



***** This Signer Tool has to be actively running every time to perform Digital Signatures.**